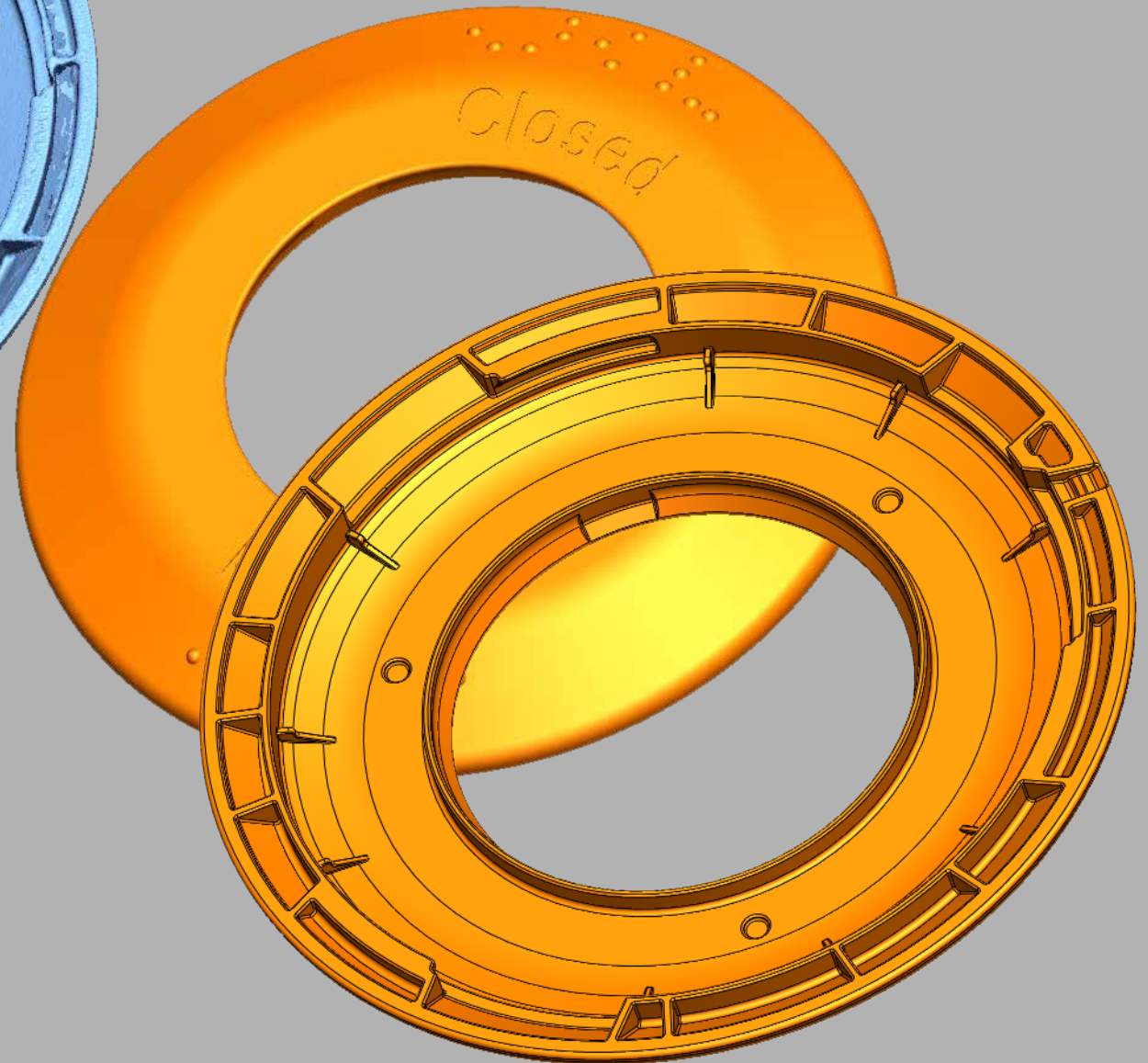
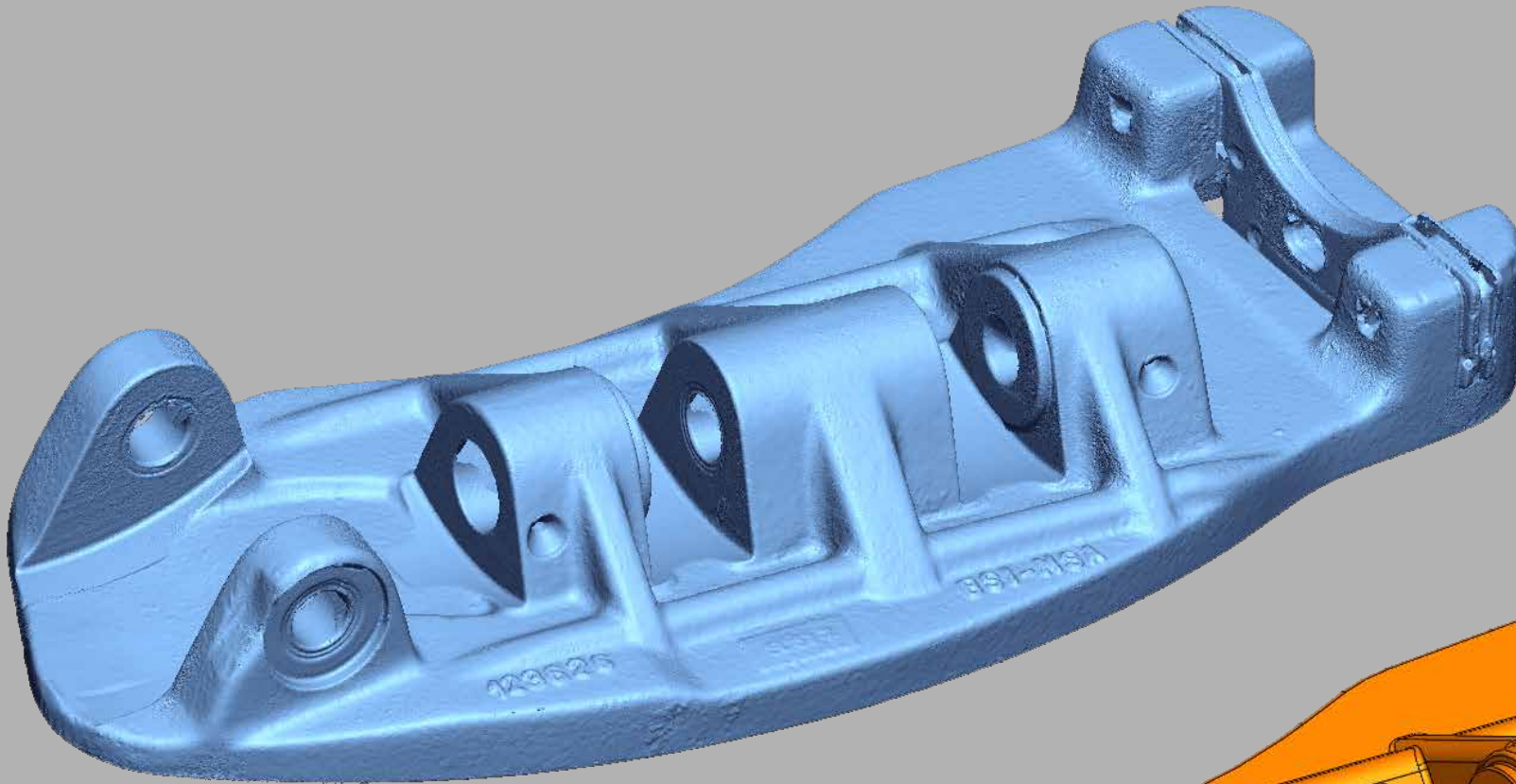


PLASTIC COVER - 3D SCAN DATA STL

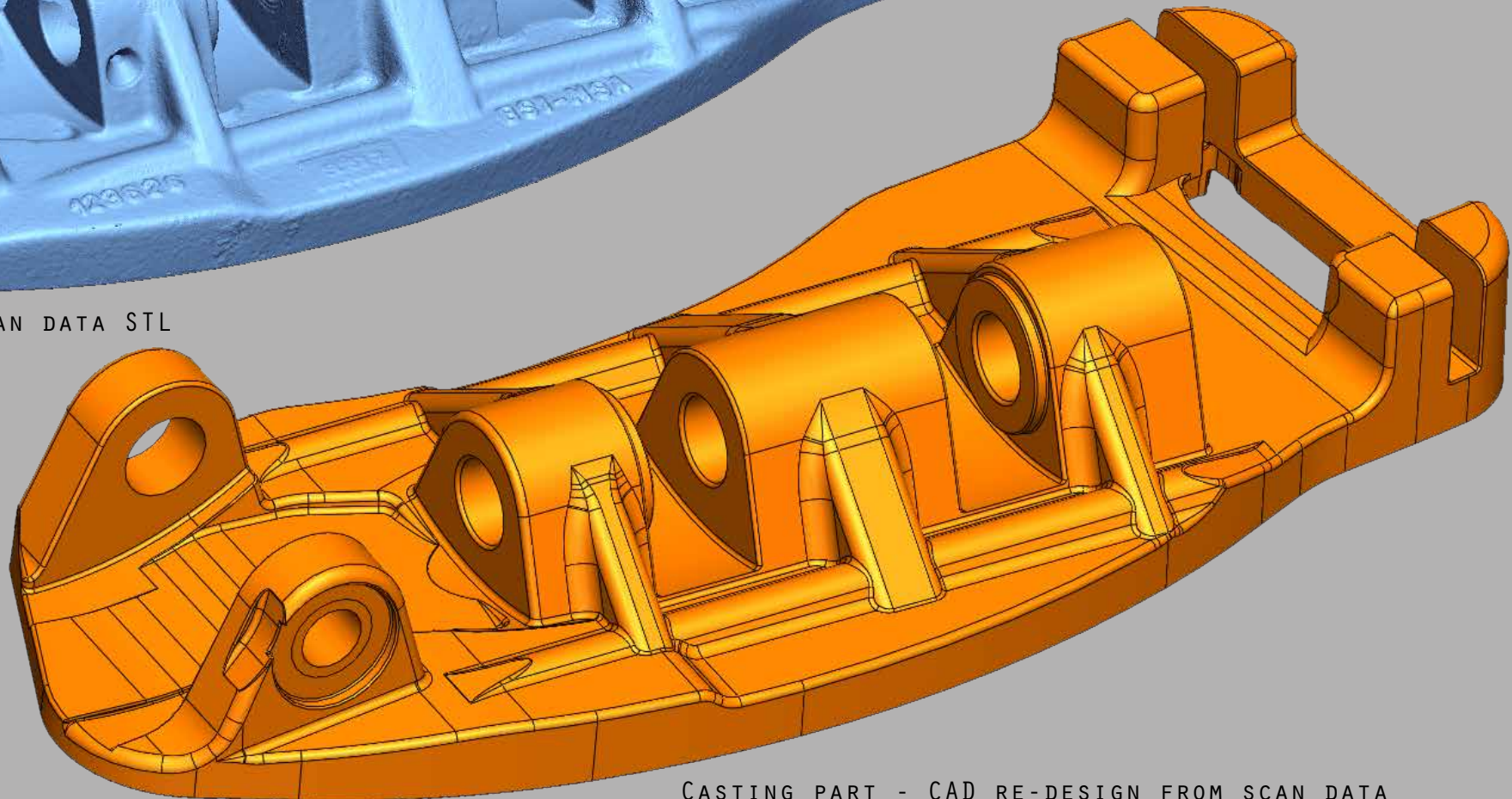


PLASTIC COVER - REVERSE ENGINEERING

3D SCANNING & REVERSE ENGINEERING

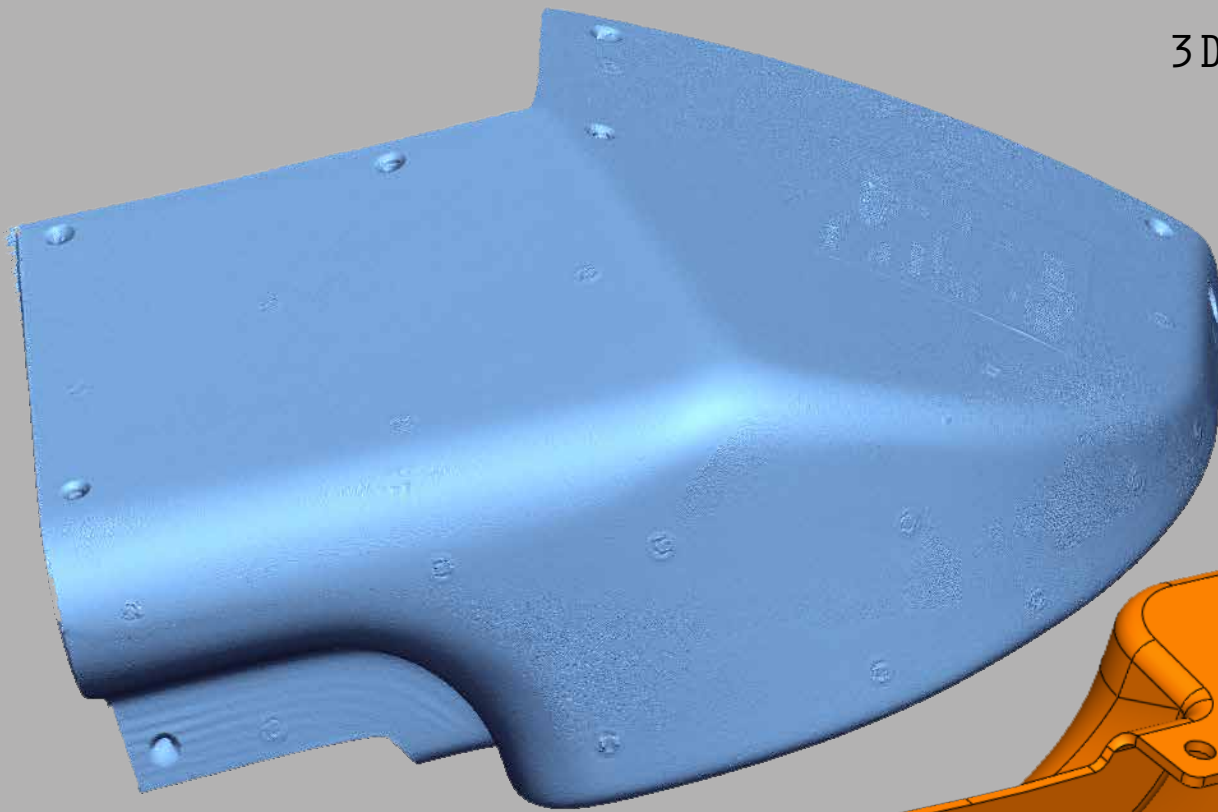


CASTING PART - 3D SCAN DATA STL

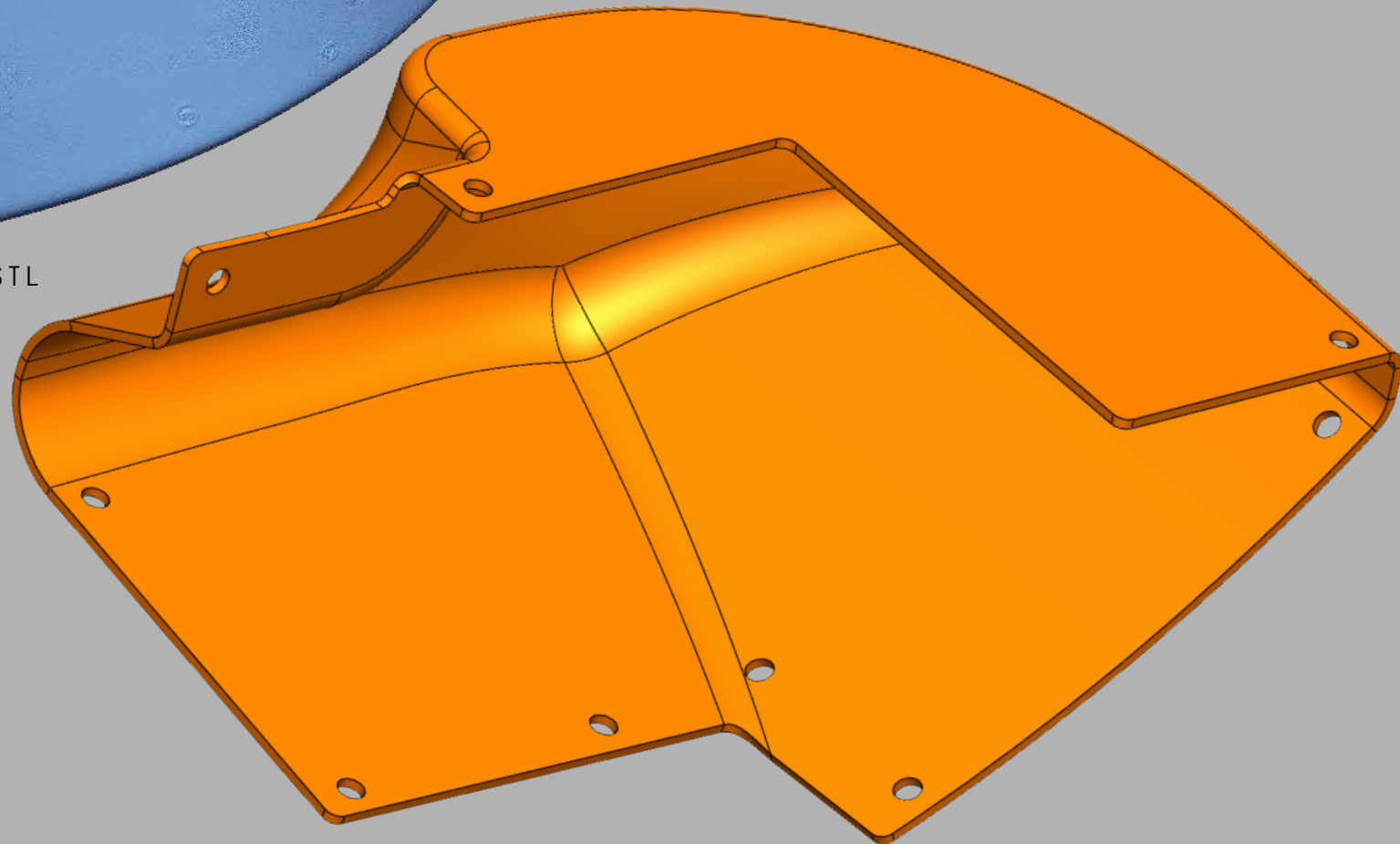


CASTING PART - CAD RE-DESIGN FROM SCAN DATA

3D SCANNING & REVERSE ENGINEERING

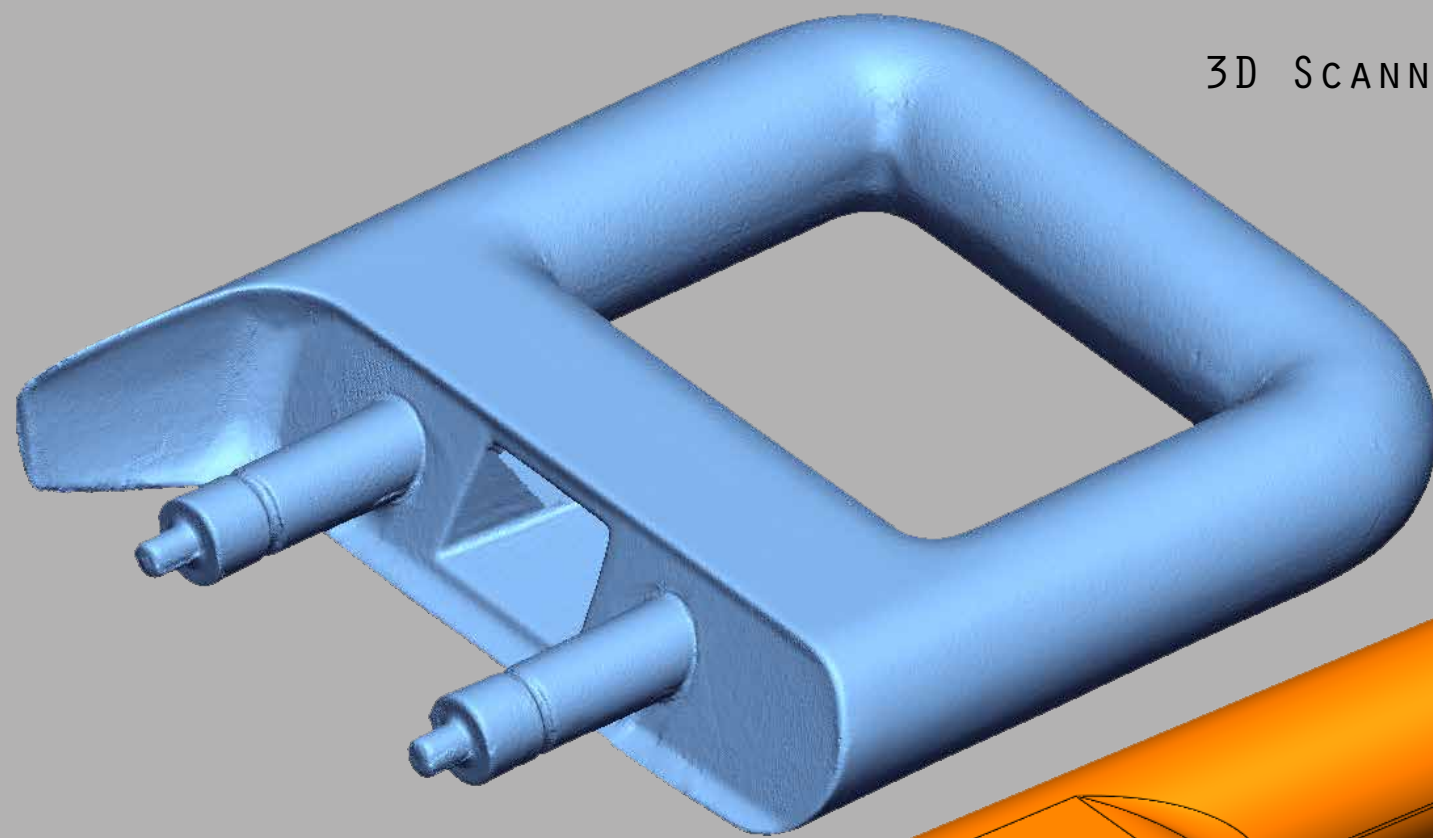


FIBERGLASS COVER - 3D SCAN DATA STL

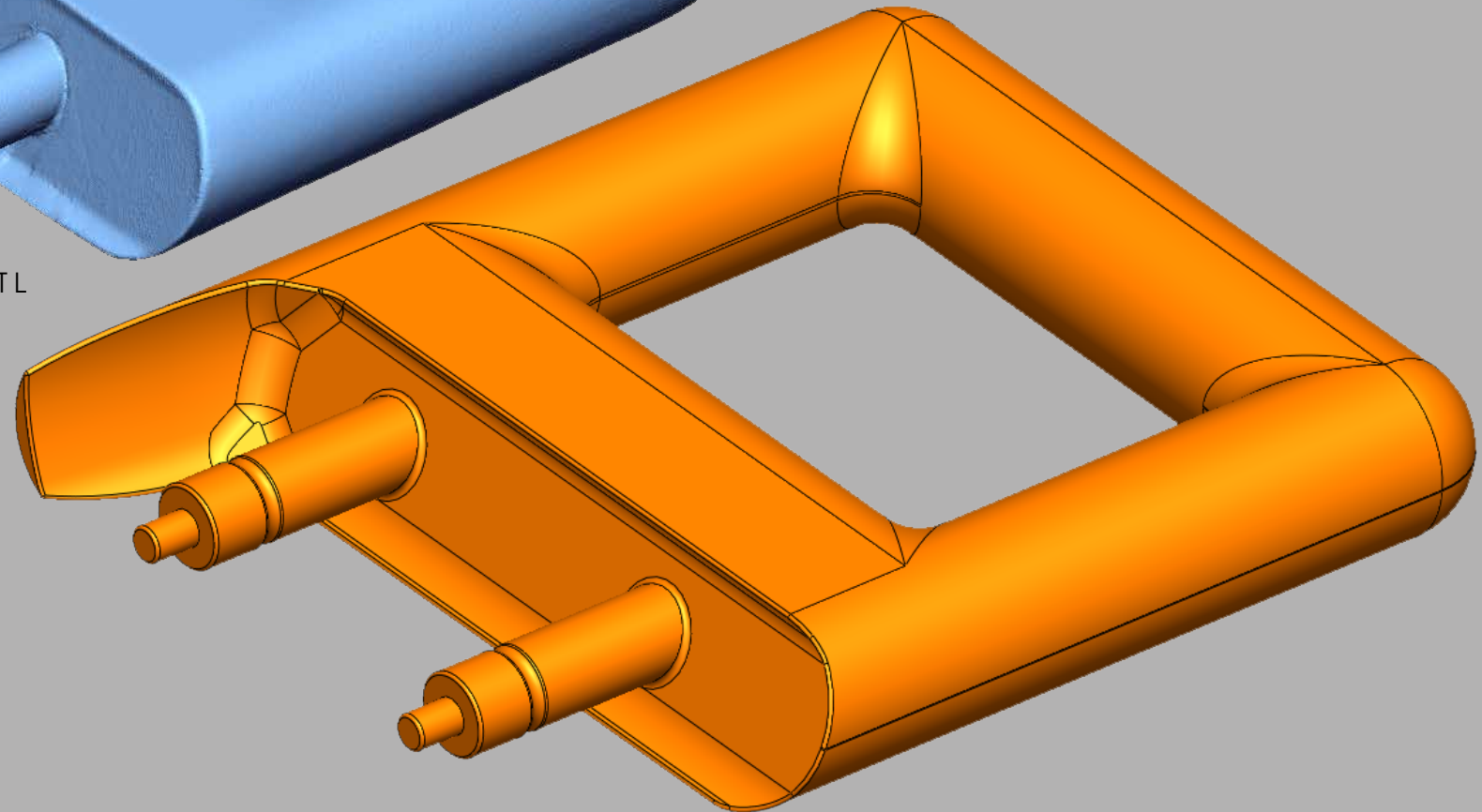


FIBERGLASS COVER - CAD REVERSE ENGINEERING

3D SCANNING & REVERSE ENGINEERING

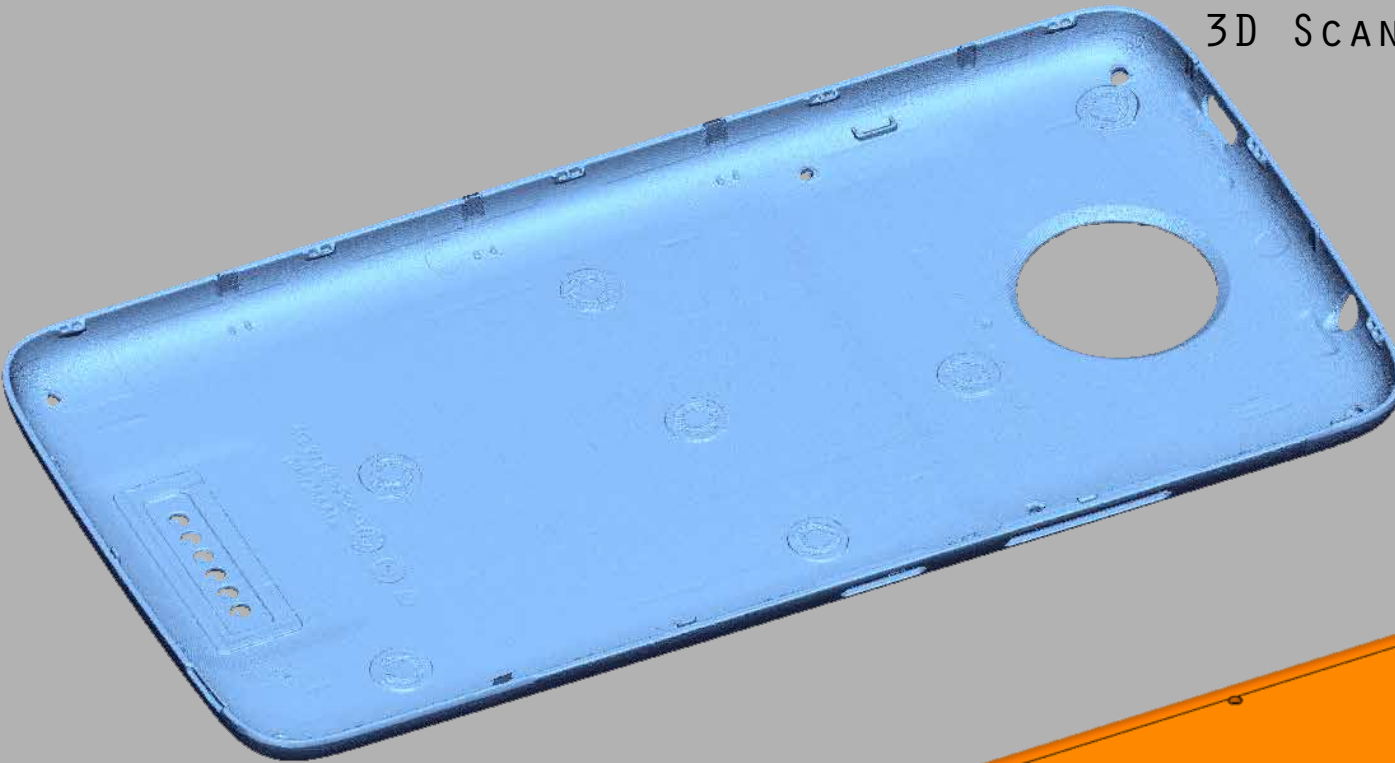


PLASTIC GRIP - 3D SCAN DATA STL

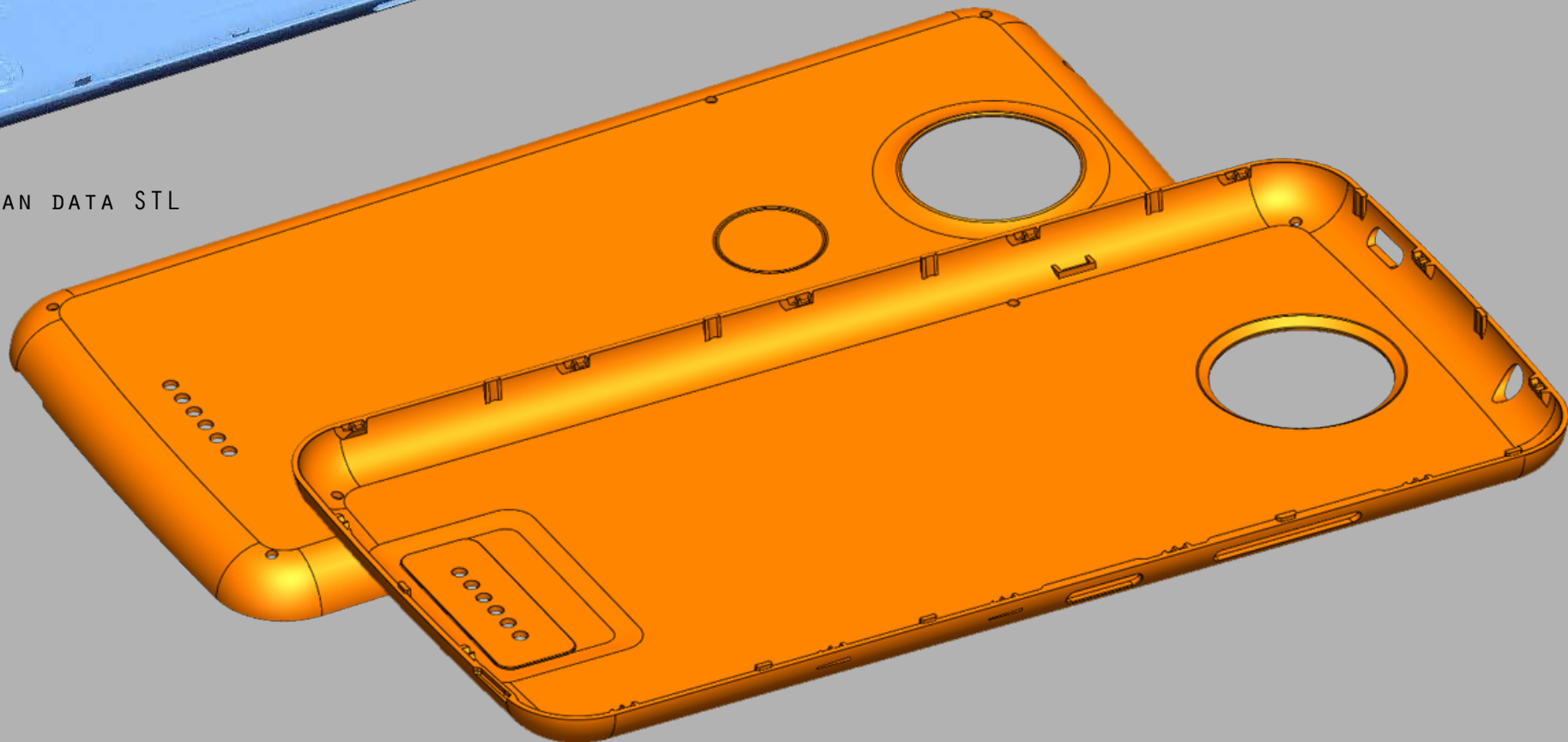


PLASTIC GRIP - CAD REVERSE ENGINEERING

3D SCANNING & REVERSE ENGINEERING



MOTOX COVER- 3D SCAN DATA STL



MOTOX COVER - CAD REVERSE ENGINEERING

3D SCANNING & REVERSE ENGINEERING

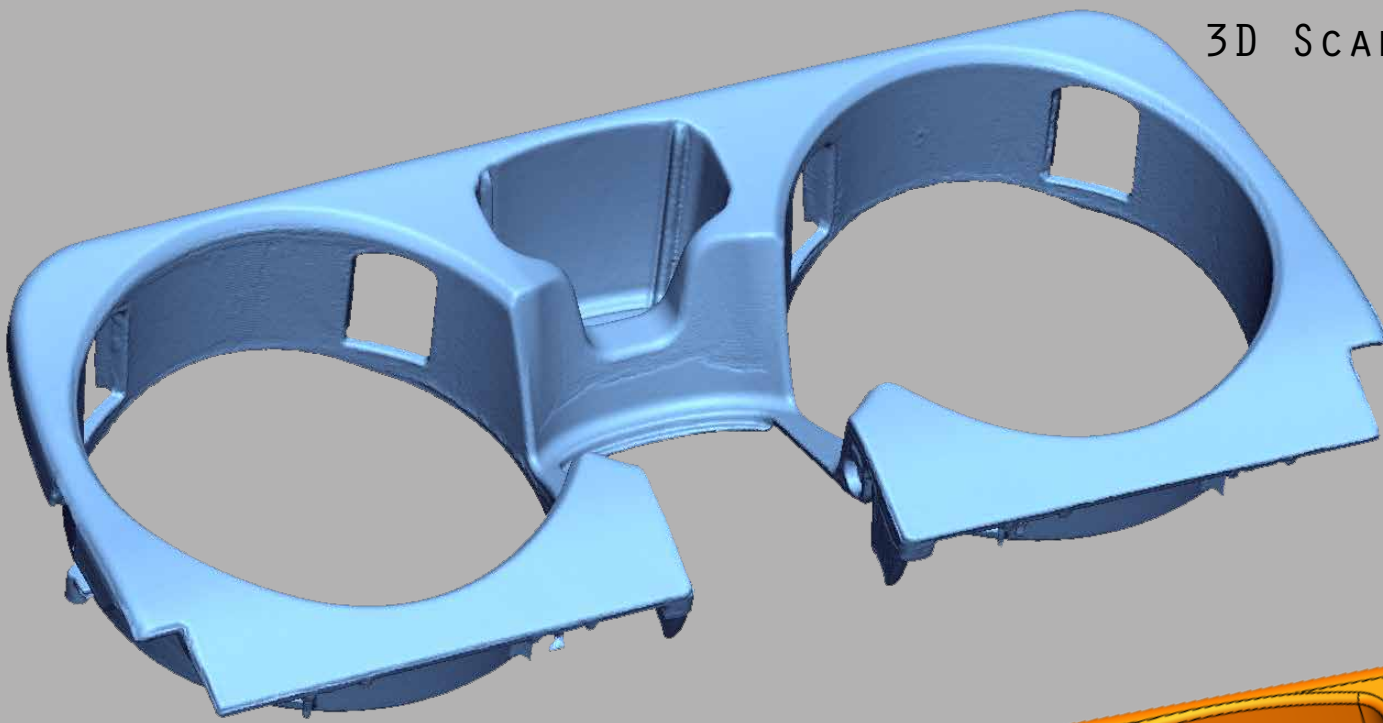


SUNGLASSES FRAME - 3D SCAN DATA STL

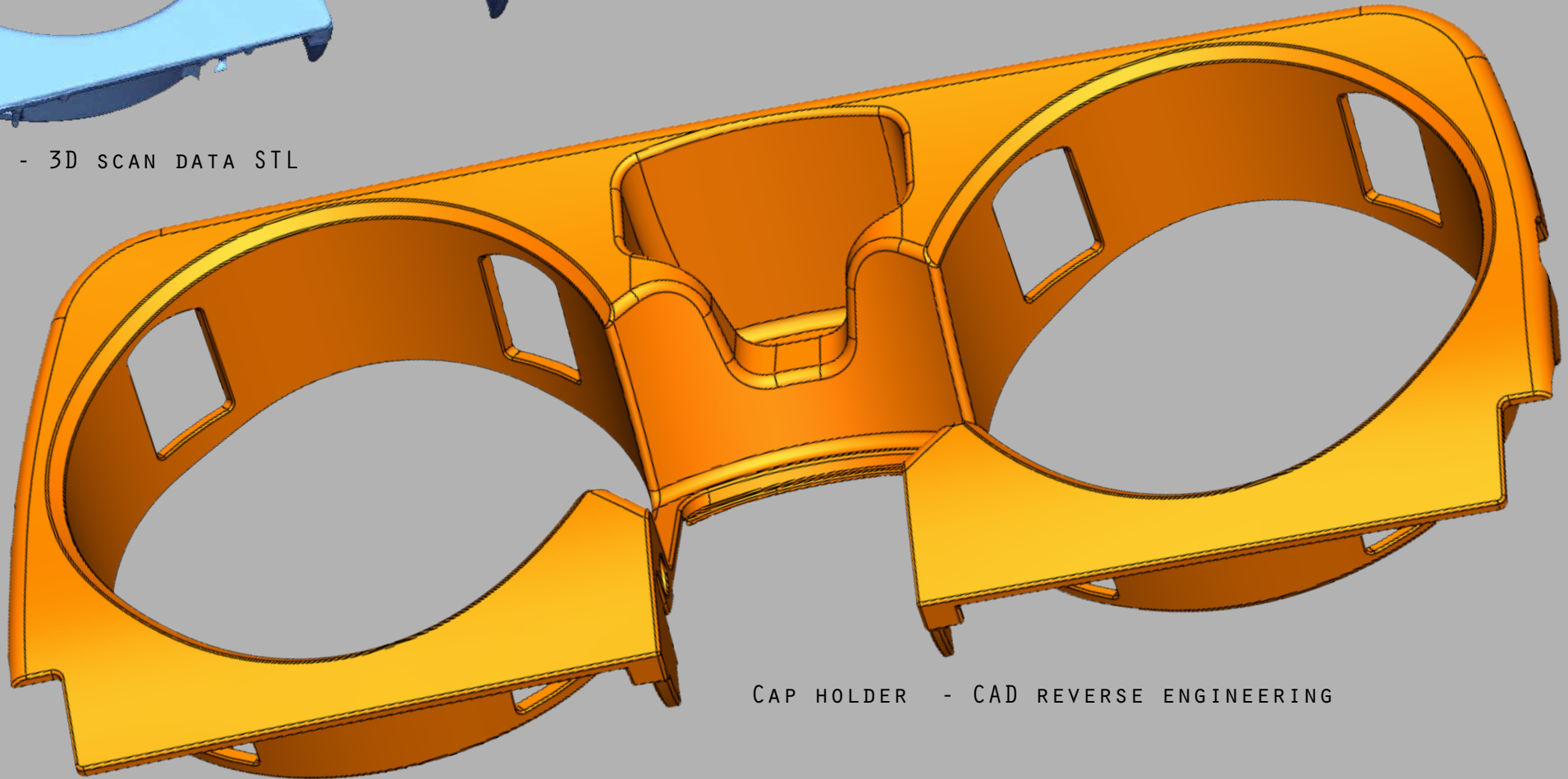


SUNGLASSES FRAME - CAD REVERSE ENGINEERING

3D SCANNING & REVERSE ENGINEERING

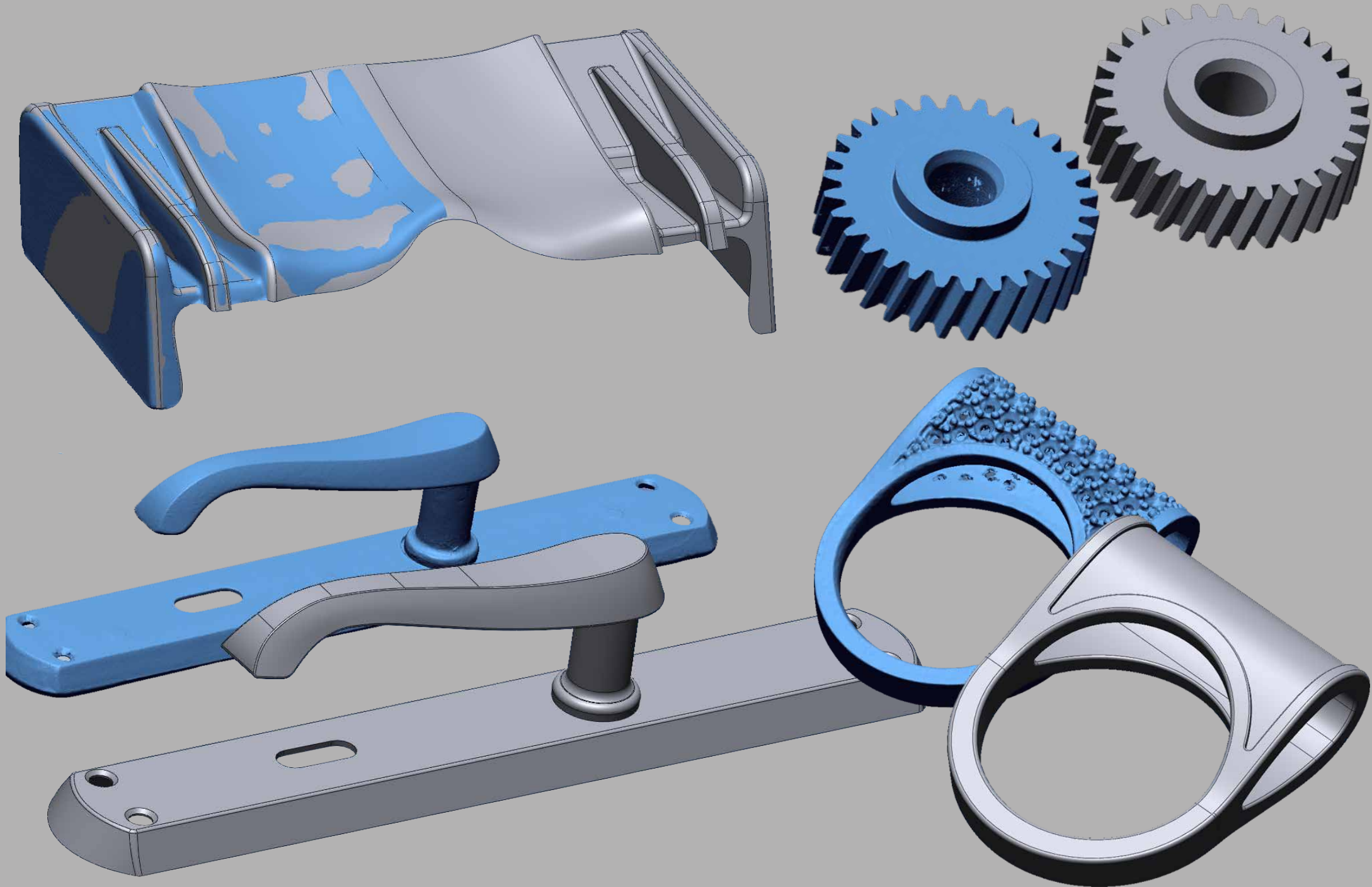


CAP HOLDER - 3D SCAN DATA STL

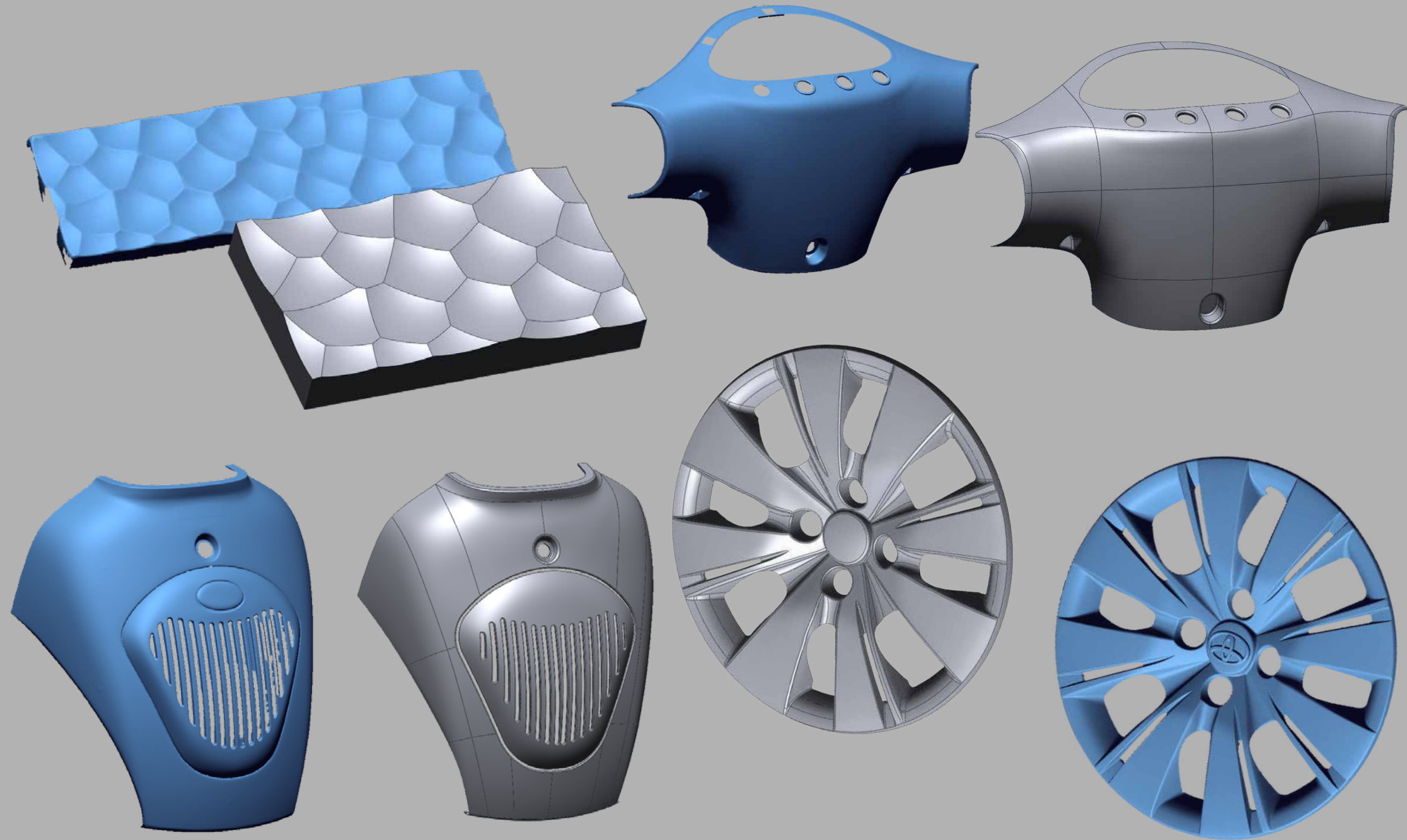


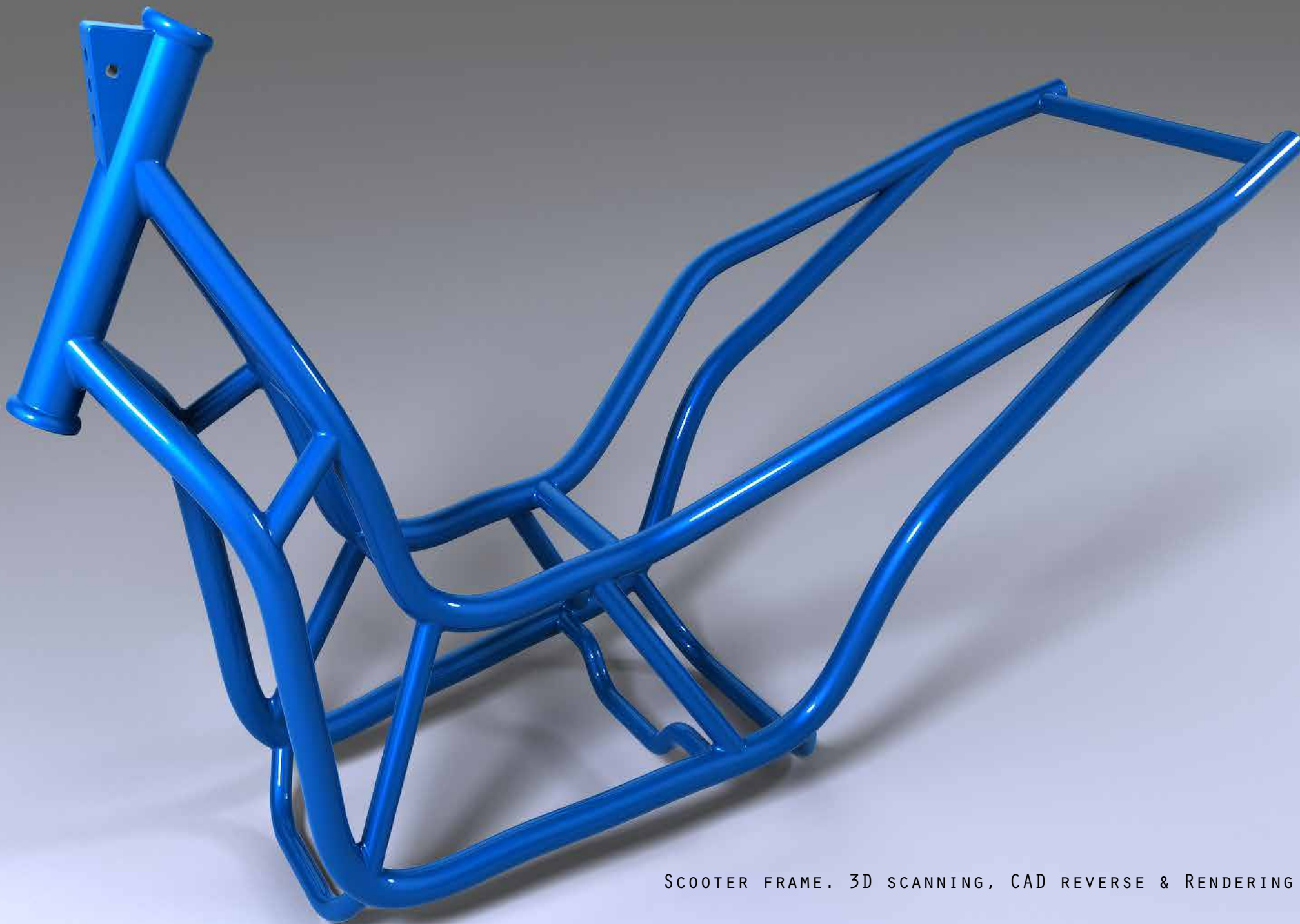
CAP HOLDER - CAD REVERSE ENGINEERING

3D SCANNING & REVERSE ENGINEERING



3D SCANNING & REVERSE ENGINEERING



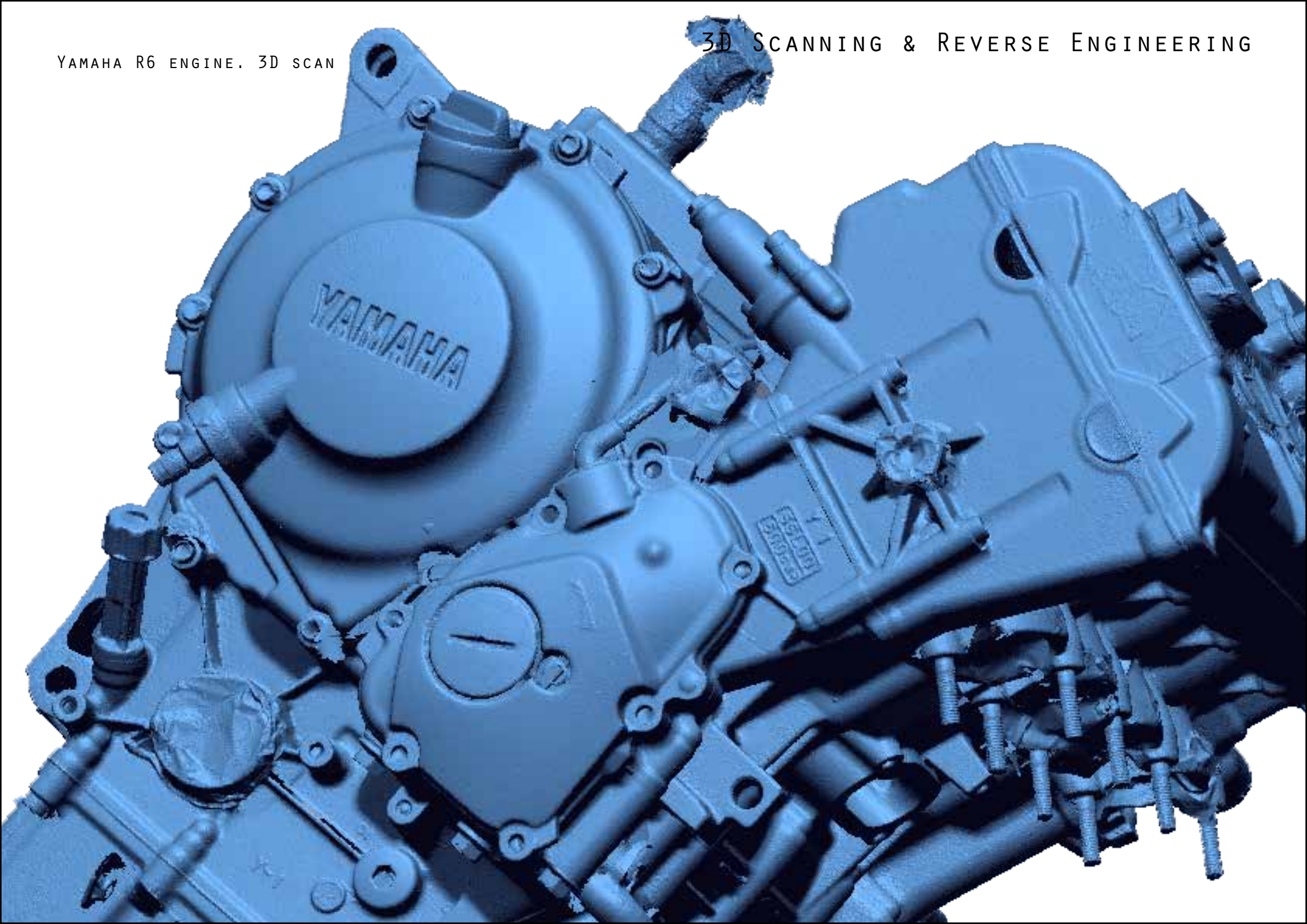


SCOOTER FRAME. 3D SCANNING, CAD REVERSE & RENDERING

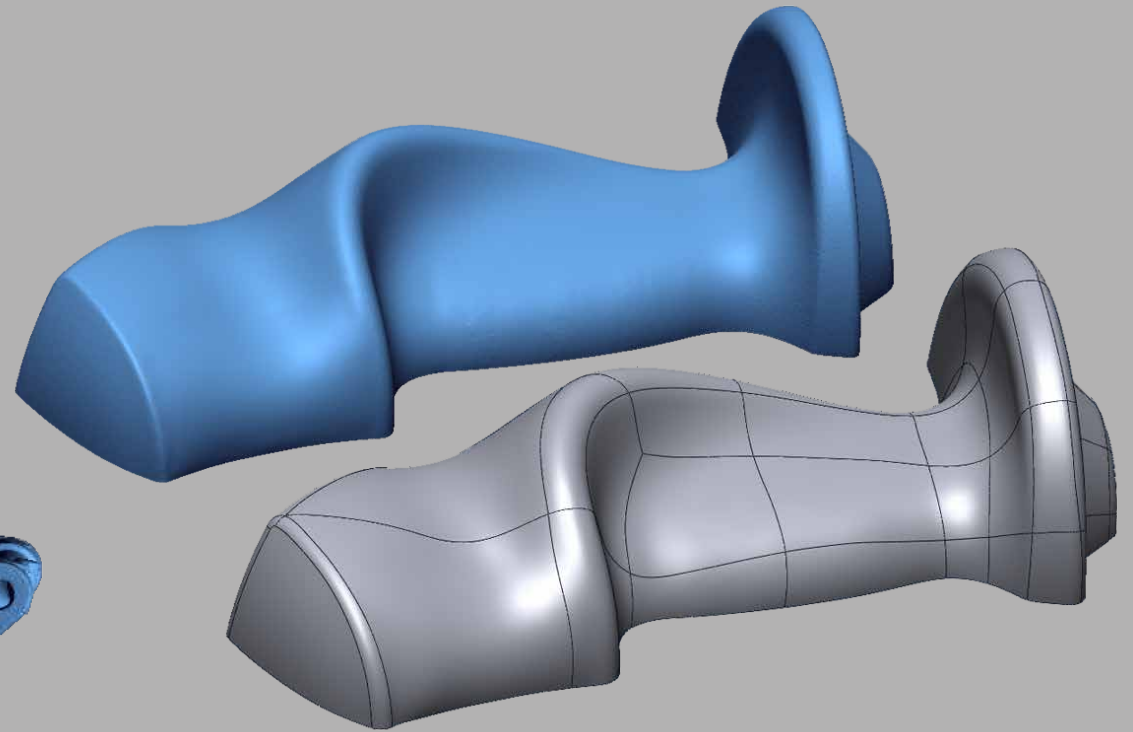
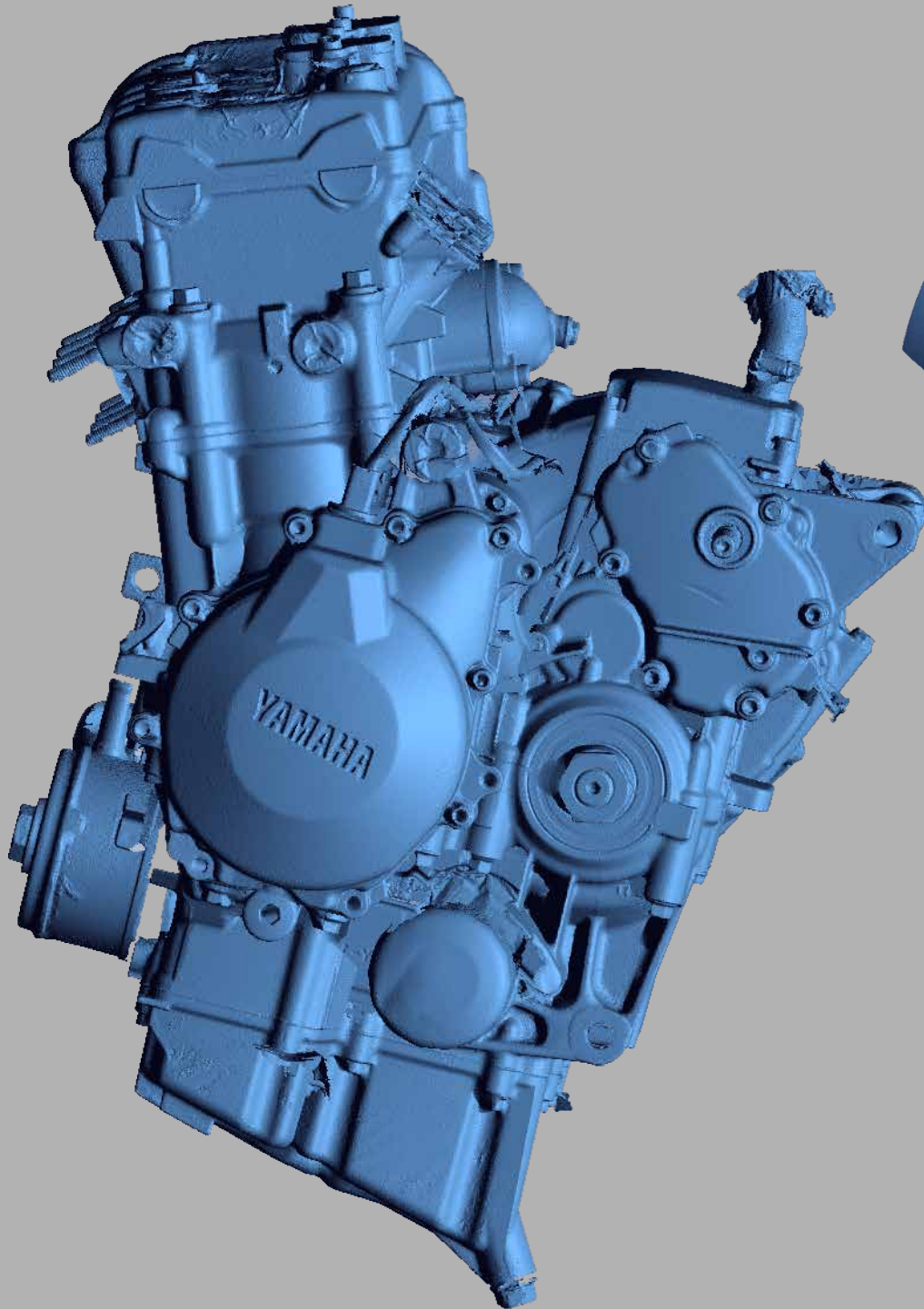


YAMAHA R6 ENGINE. 3D SCAN

3D SCANNING & REVERSE ENGINEERING

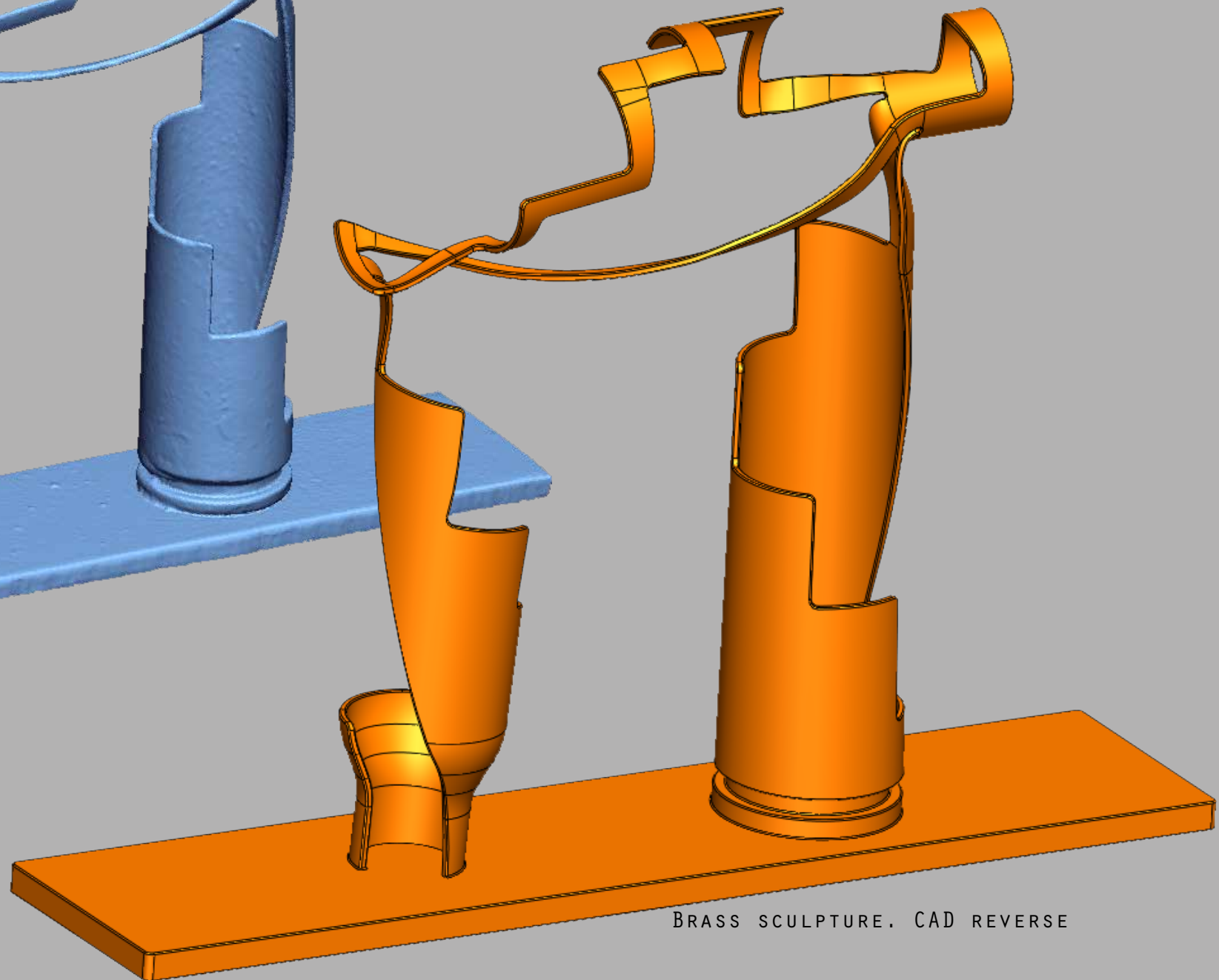
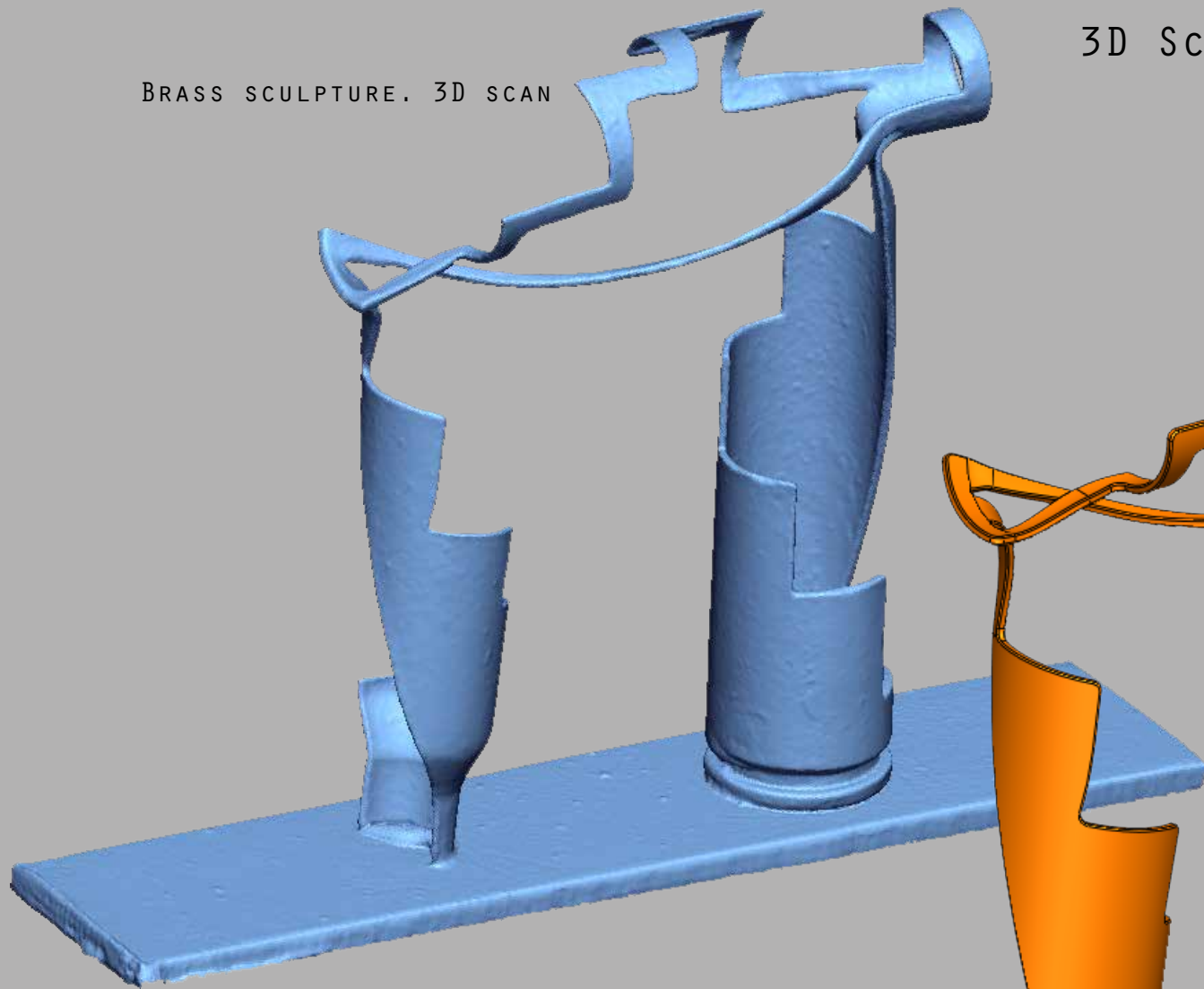


3D SCANNING & REVERSE ENGINEERING



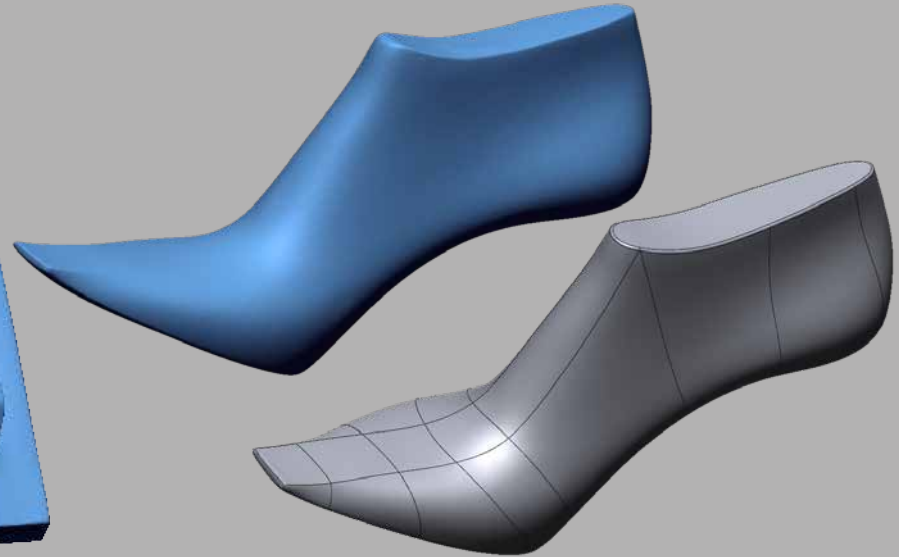
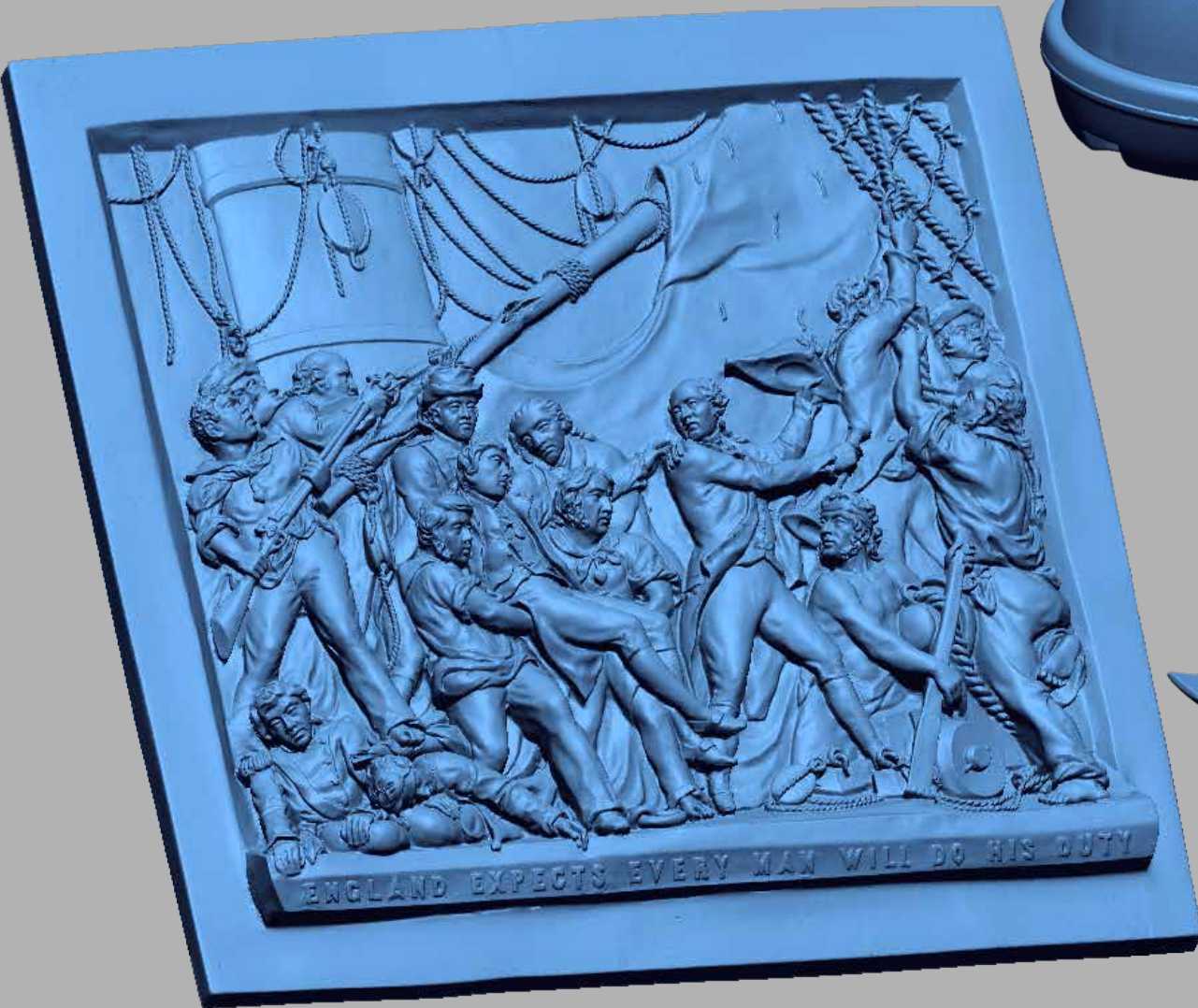
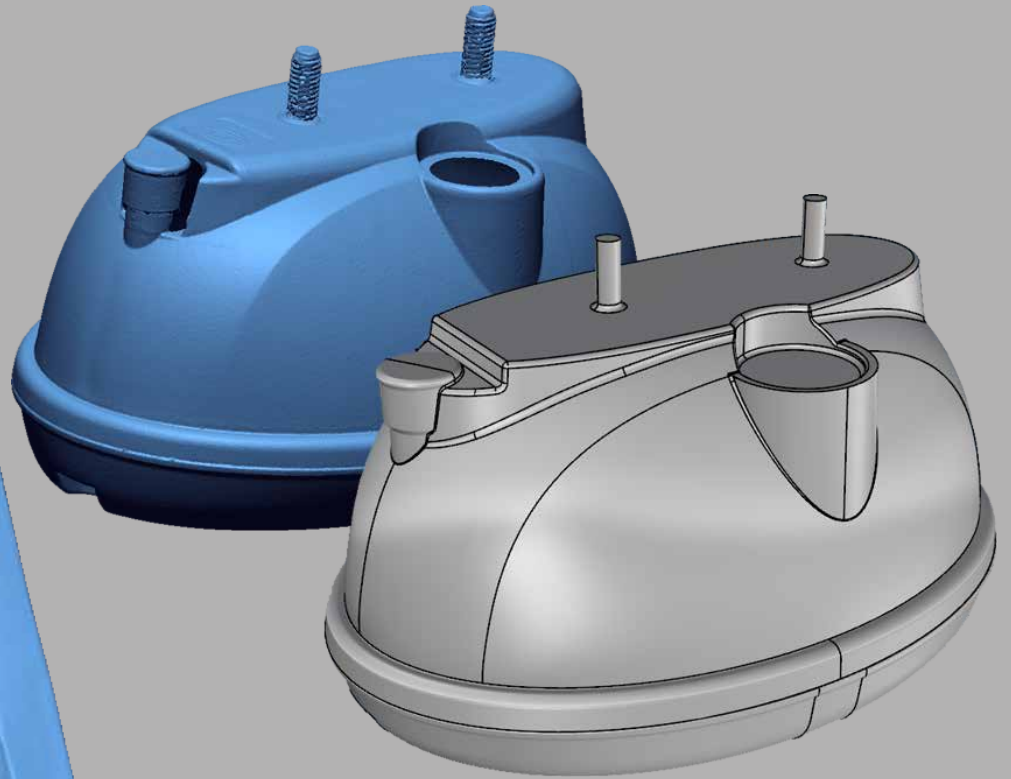
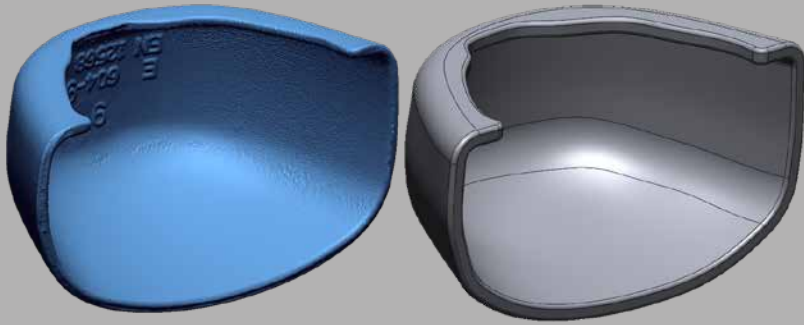
3D SCANNING & REVERSE ENGINEERING

BRASS SCULPTURE. 3D SCAN



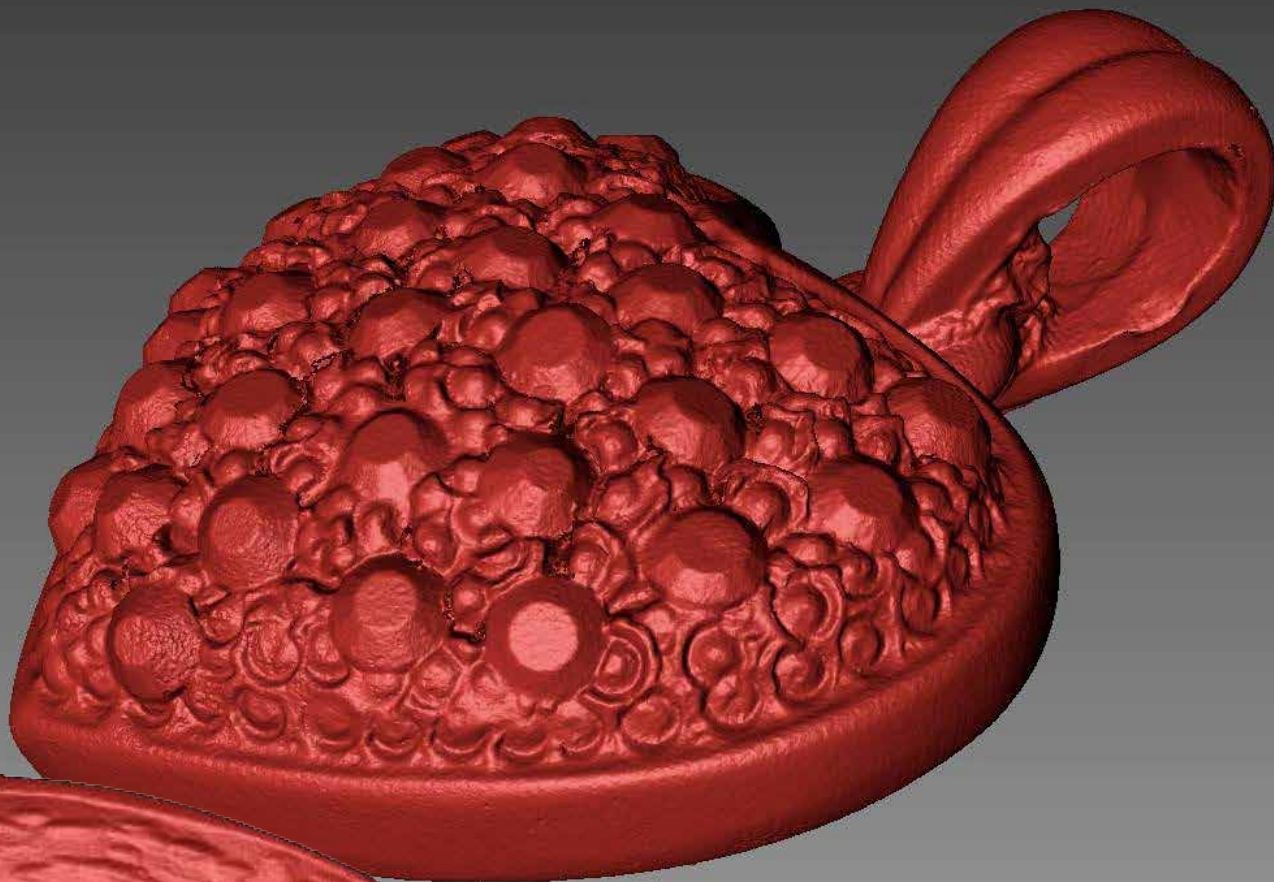
BRASS SCULPTURE. CAD REVERSE

3D SCANNING & REVERSE ENGINEERING



3D MACRO SCANNING





3D MACRO SCANNING

AIRCRAFT SCALE MODEL 3D SCANNING

